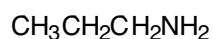
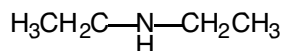


Selected answers to homework problems.

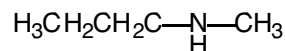
Lecture 7



propylamine



diethylamine



*N*-methylpropylamine

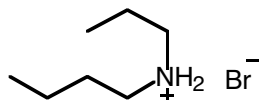
15.19

15.20 Answer in book

15.21 (a) butylamine, primary amine (b) isopropylamine (primary amine)

15.22 Answer in book

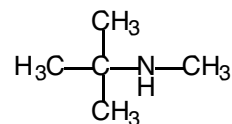
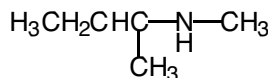
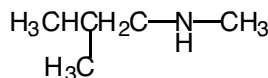
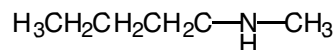
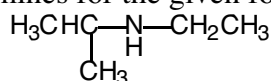
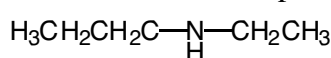
15.25 (a) methylammonium chloride (b) *N*-methylanilinium bromide (c)



15.32 Answer in book

15.43

a. There are six possible amines for the given formula



b. There are many possible tertiary amines. Here are several of them:

